



See our full report at:

sustainability.doerun.com

We want to hear your questions and thoughts

doerun.com/contact-us/

.....

- 1. EDR Group: Doe Run Economic Impact Study 2019
- 2. National Mining Association: Economic Impact of Mining – Missouri
- 3. Bureau of Labor Statistics: Occupational Outlook Handbook
- 4. EDR Group: Battery Industry Economic Impact Study 2019

1801 Park 270 Drive
Suite 300
St. Louis, MO 63146



THE DOE RUN COMPANY

2018

Sustainability Report
Highlights



We're adopting new technologies for the future:

We became the first operation in the U.S. to deploy the **Railveyor electric rail system** in a production environment underground. We also are using **drone technology** to help gather information and inform decisions.



We're keeping safety our top priority:

Completed **31,000 hours** of health and safety training.

10 of our facilities have achieved multiple years with **no lost-time incidents**.



We're committed to our environment:

Invested \$450 million over 10 years to minimize environmental impact at our operations.



We're expanding our operations:

Built a new vent shaft to **expand mining** in the southeast end of the Viburnum Trend.

Did You Know?

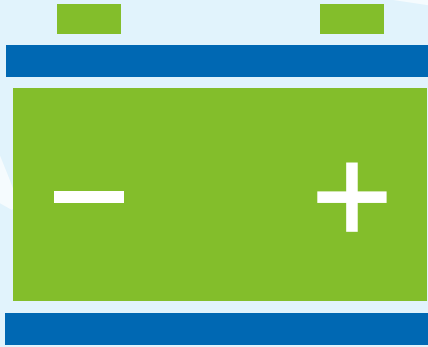


The majority of lead mined here in Missouri is used in lead **batteries**, which power cars, store renewable energy and provide back-up energy for communications systems.



Lead batteries are the key to a cleaner, greener future.

MORE THAN
99%
of lead batteries are recycled.



Every new lead battery is comprised of more than **80%** recycled lead.

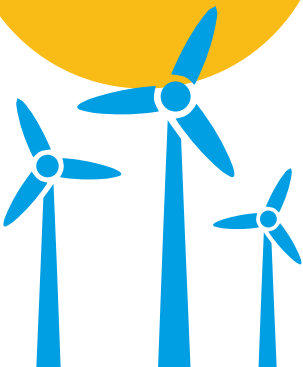
13.5 million
are recycled annually
right here by Doe Run.



Lead batteries store solar and wind power.



Doe Run supports lead battery research taking place at Missouri University of Science and Technology's EcoVillage, a solar-powered housing complex on the campus.



CONTRIBUTING
— TO THE —
Local Economy

We are committed to **supporting our local communities** through high-paying jobs, donations, supplier spending and taxes.

MORE THAN
\$1 billion
in economic impact
in Missouri¹

MINING SECTOR
8%
expected growth
from 2016-2026³

OUR AVERAGE WAGE
54% higher
than Missouri's
average wage²



NEARLY
1,250
employees

2018 SPENDING
\$181 million
with nearly 700
Missouri vendors



The lead battery
industry contributes
more than
\$2.4 billion
to Missouri's
economy.⁴



Read more in our 10th annual
sustainability report at:
sustainability.doerun.com

SUPPORTING — OUR — Communities

We live here too, which is why
we invested \$178 million
in our communities in 2018:



STEM education programs
in local school districts.

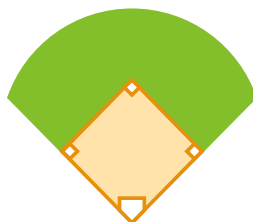


College scholarships
for local students.



Transferring ownership
of the Herculaneum Fire
Station building and land to
the fire department.

Transferring ownership
of the Viburnum baseball
complex to Iron County C-4
School District.



Annual Old Miners
Days and Fall Rocks
community events.

**OLD
MINERS
DAY**

**FALL
ROCKS**

“Doe Run offers competitive salaries and excellent benefits. When I see that many people have worked at Doe Run for 20+ years, I know that I can have a lifetime career working for this company.”

MAVE MILLER
QUALITY ASSURANCE OFFICER, ANALYTICAL LAB