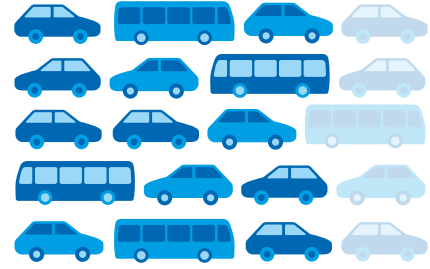


DID YOU KNOW?¹

ESSENTIAL



75%

Lead batteries make up 75 percent of the world's battery market, including **starting 270 million cars and trucks** in the U.S.

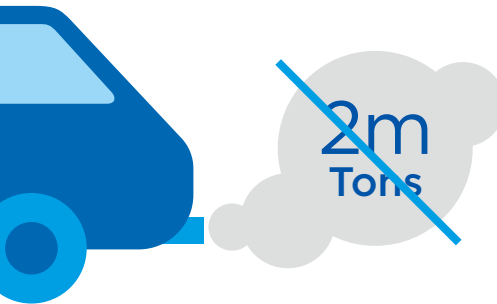
SAFE

100yrs

Unlike newer battery technologies, lead batteries have more than a century of safe use in vital industries, such as: **transportation, communication, security, marine, nuclear, medical and aviation.**



INNOVATIVE



2020

By 2020, lead battery start-stop technology will **cut up to 2 million tons of vehicle emissions** annually.

SUSTAINABLE

99%

Lead batteries have a 99 percent recycling rate, and every **new lead battery is comprised of more than 80 percent recycled lead.**



1801 Park 270 Drive
Suite 300
St. Louis, MO 63146

2017 DOE RUN SUSTAINABILITY HIGHLIGHTS



See Doe Run's full 2017 Sustainability Report at sustainability.doerun.com

1. www.EssentialEnergyEveryday.com
2. National Mining Association: Economic Impact of Mining - Missouri
3. National Association of Manufacturers: Missouri Manufacturing Facts
4. National Mining Association: Annual Mining Wages vs. All Industries, 2017

DID YOU KNOW?

Lead Batteries

are Essential, Safe, Innovative & Sustainable



2017

SUSTAINABILITY HIGHLIGHTS

\$57m
Spent more than \$57 million on **environmental & remediation projects**

\$73m

Completed the fifth and final **water treatment plant** in five years, totaling nearly \$73 million

10yrs

Achieved 10 years with **no lost-time incidents** at Brushy Creek Mill

17th

Received a **"Perfect Safety Award"** for the 17th year at our manufacturing subsidiary Fabricated Products, Inc.

28th

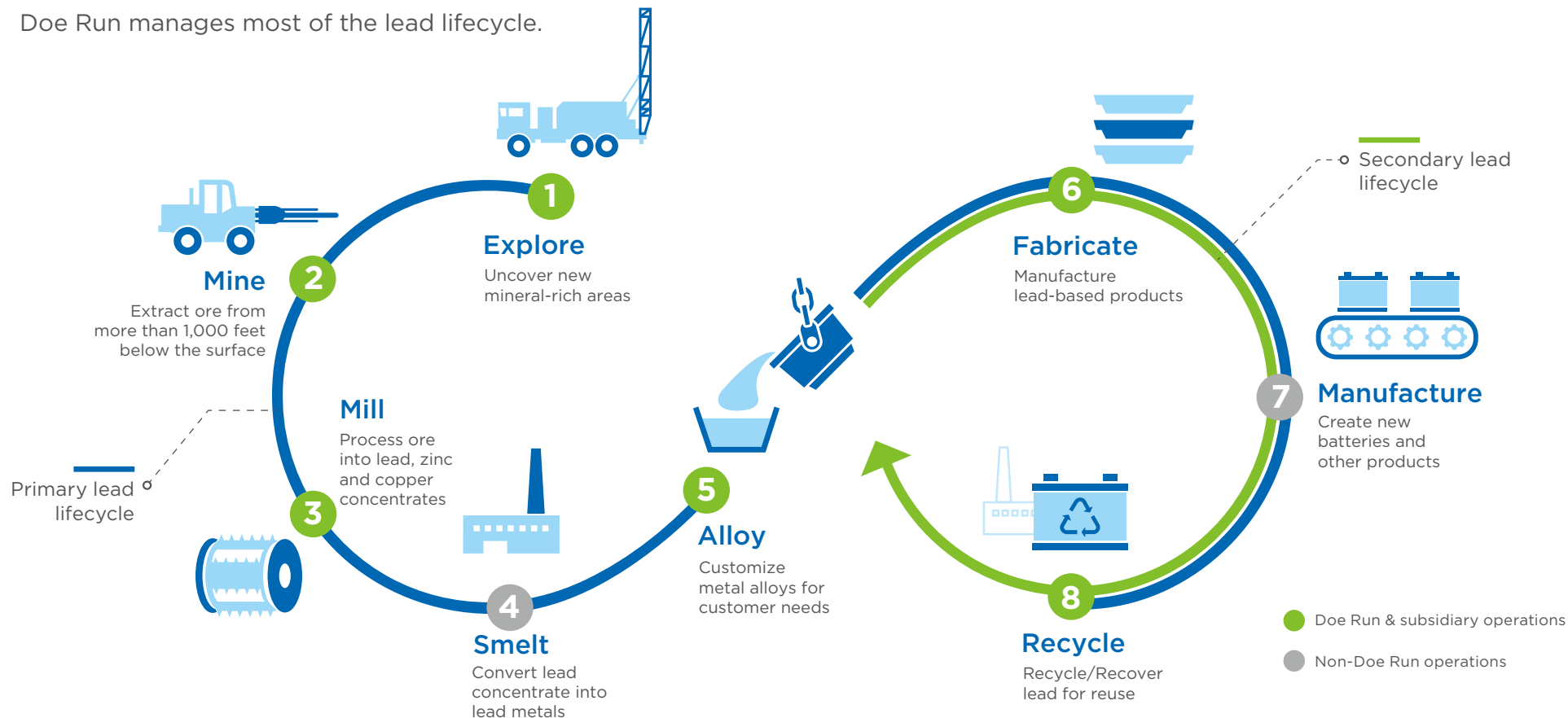
Won our 28th **Sentinels of Safety Award**, the highest national award for mine safety

Learn more at: sustainability.doerun.com

The Infinite Lead Lifecycle

Doe Run manages most of the lead lifecycle.

To learn more visit: Doerun.com/What-We-Do



SUPPORTING STEM EDUCATION

\$10,000 to add **Project Lead The Way** curriculum at Valley R-VI School District, exposing children to **STEM skills** that are in increasingly high demand for future jobs

\$50,000 air compressor to **Missouri S&T** to give students hands-on experience with real mining tools

\$12,000/yr in **scholarships** to **Missouri S&T**, **Mineral Area College** and **Southwest Baptist University's** nursing program in Salem

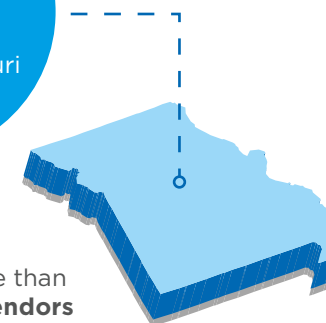


Donations + Scholarships

CONTRIBUTING TO THE LOCAL ECONOMY

Doe Run employs nearly **1,200** people in Missouri

\$172m spent with more than **744 Missouri vendors**



INDUSTRY JOBS (TOTALS IN MISSOURI)

7,893² Mining Employees

259,300³ Manufacturing Employees

AVERAGE MISSOURI INDUSTRY SALARIES

Mining Jobs \$\$\$\$\$\$\$\$\$\$\$\$\$\$\$\$\$ \$67,919⁴

Manufacturing Jobs \$\$\$\$\$\$\$\$\$\$\$\$\$\$\$\$\$ \$68,738³

All Industry Jobs \$\$\$\$\$\$\$\$\$\$\$\$\$ \$47,810⁴